

# Technical Solutions Guide

## Casella Drive



## Introduction

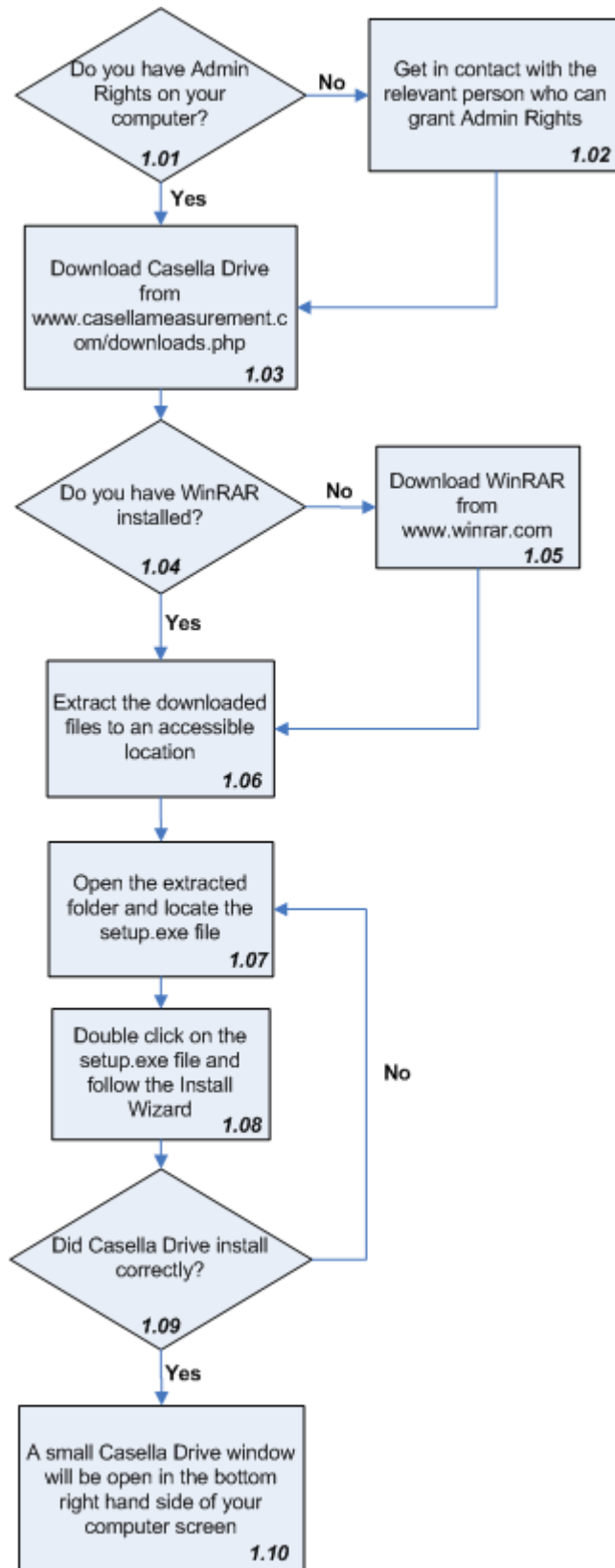
This troubleshooting guide is intended to support users with Casella product. For convenience, each step within the flow diagram contains a unique address which allows Casella support personnel to understand what stage a user is at within a process. If assistance is needed please contact **helpdesk.casellameasurement.com** or call **+44 (0)1234 847799** referencing the document QMS number, the flow and the step number.

## Contents

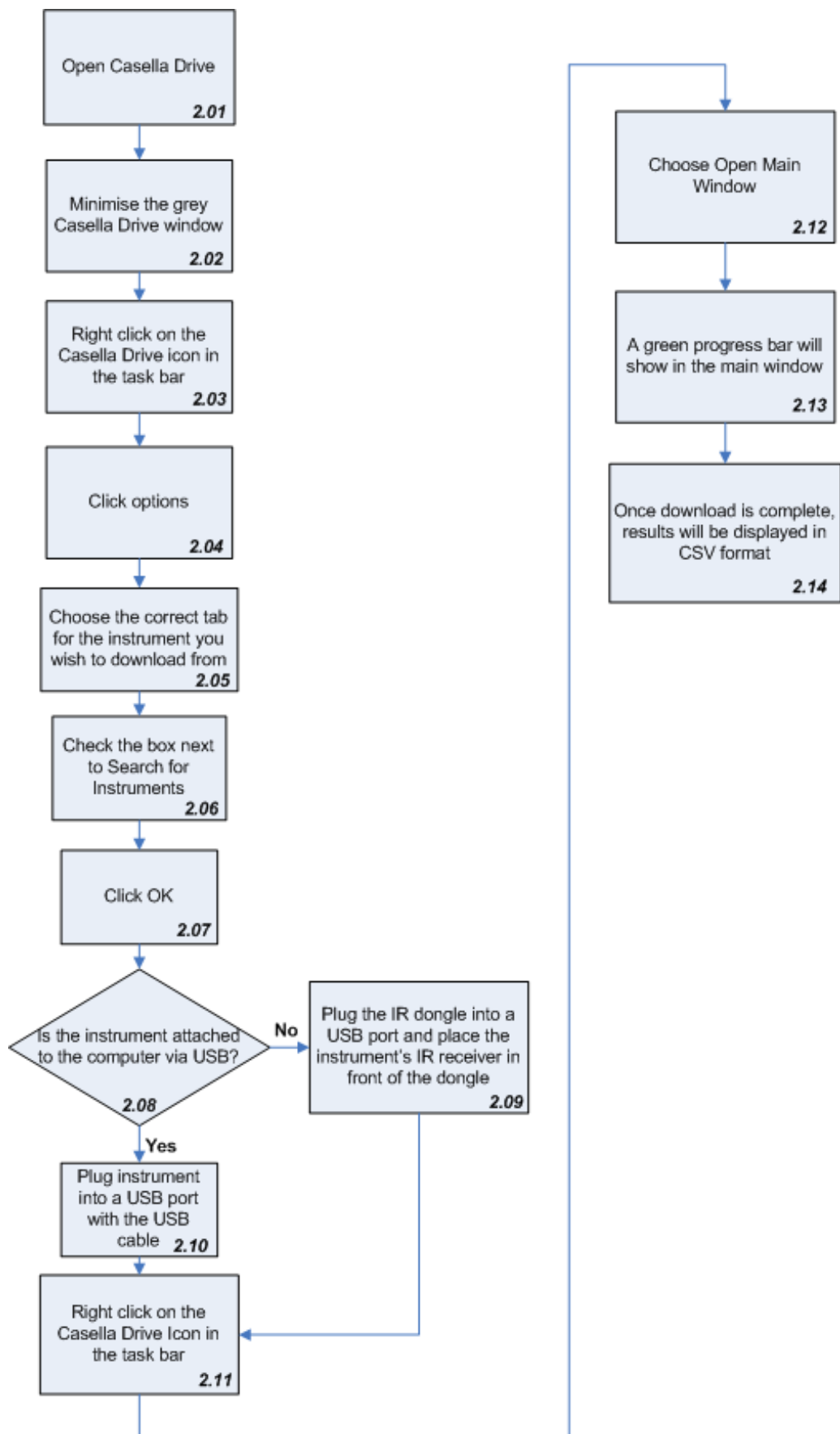
<u>Page</u>	<u>Flow Diagram</u>	<u>Description</u>
3	1	<i>Installing Casella Drive</i>
4	2	<i>Downloading Results Using Casella Drive</i>
5	3	<i>Locating COM Port Assignment</i>

This document is originated by Casella's Product Support. Request for changes should be submitted to Casella Product Support via the Help Desk. This is a controlled document and should not be copied under any circumstances.

## Installing Casella Drive



## Downloading Results from Casella Drive



## Locating

### Notes

1. This flow diagram refers to Windows 7

